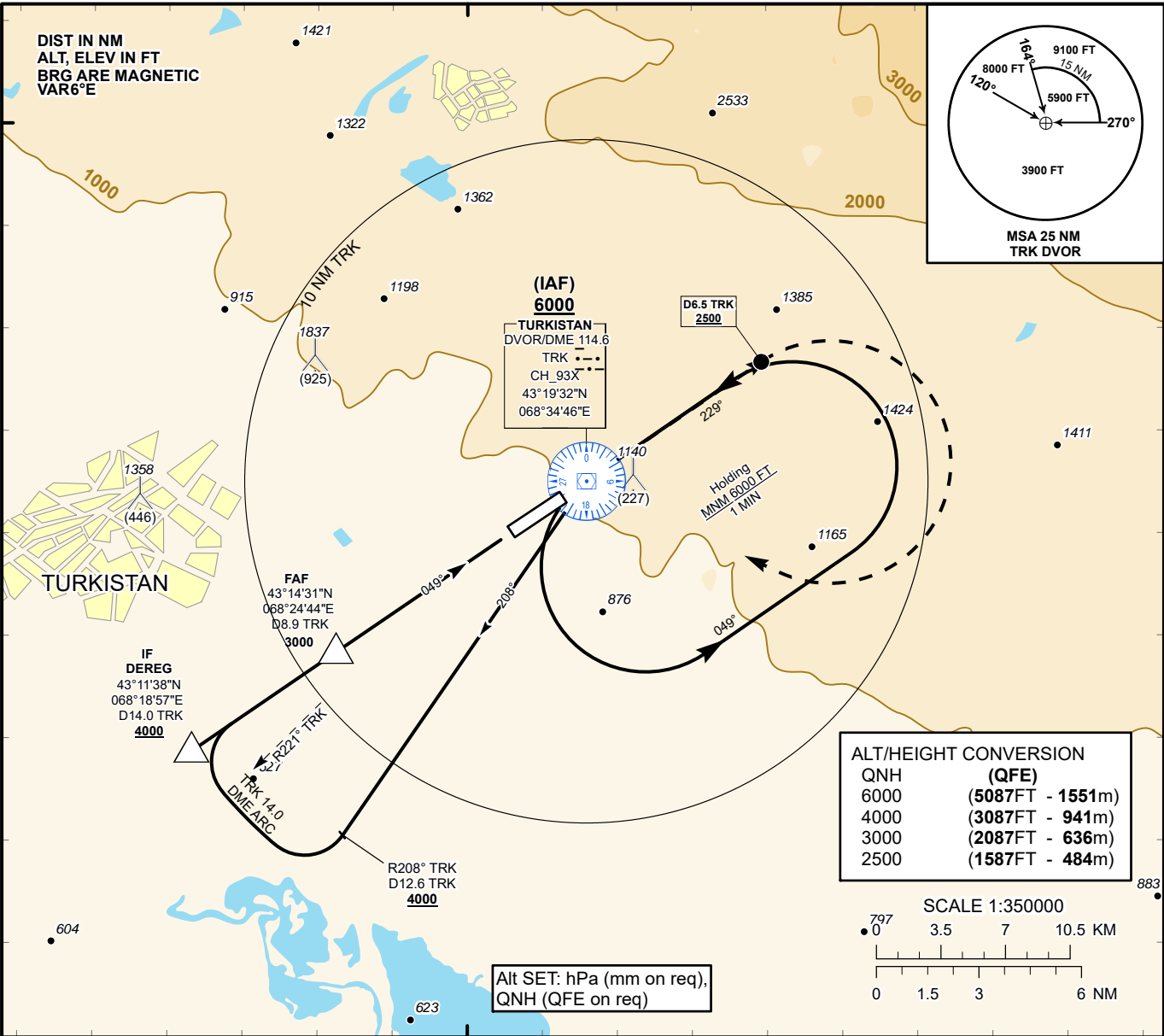


INSTRUMENT  
APPROACH  
CHART - ICAO

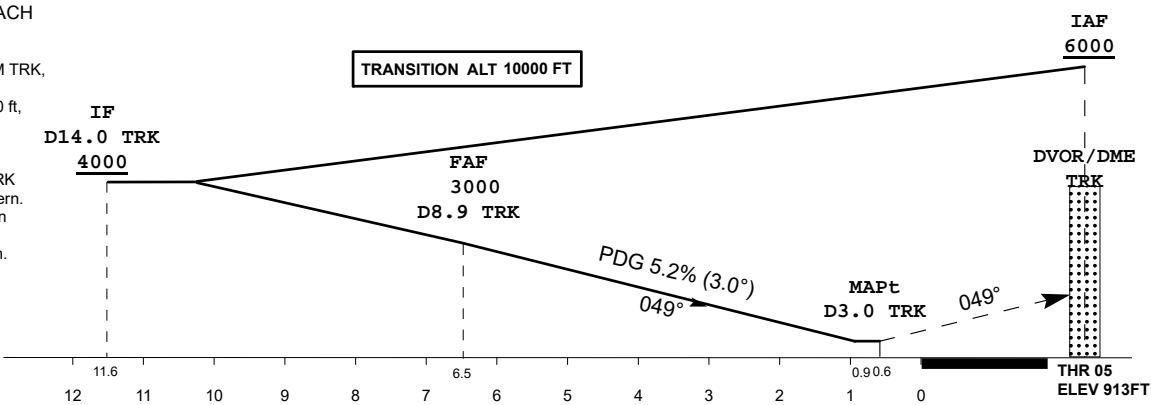
AERODROME ELEV **989 FT**  
HEIGHTS RELATED TO  
THR RWY 05 - ELEV **913 FT**

TURKISTAN TOWER 131.3  
TURKISTAN ATIS (EN) 124.4  
TURKISTAN ATIS (RU) 118.3

TURKISTAN  
VOR/DME Z  
RWY 05



MISSED APPROACH  
Climb on track 049°,  
at 2500 ft or above,  
outbound to D6.5 NM TRK,  
turn RIGHT to TRK.  
Climb initially to 4000 ft,  
then as directed.  
RADIO FAILURE:  
In the case of RCF  
climb to 6000 ft to TRK  
and join holding pattern.  
Missed approach turn  
speed limited to  
240 Kt IAS maximum.



Aircraft Category		A	B	C	D	DIST to THR	NM	6.5	6.0	5.0	4.0	3.0	2.0	1.0
Straight-in Approach OCA/H	VOR/DME	1220(310)	1220(310)	1220(310)	1220(310)	DME TRK	NM	8.9	8.4	7.4	6.4	5.4	4.4	3.4
						ALTITUDE	FT	3000	2872	2554	2236	1917	1599	1280
						HEIGHT	FT	2087	1959	1641	1323	1004	686	367
Aerodrome Operating Minima MDH ft x RVR(CMV)						GS	Kt	80	100	120	140	160	180	
						Desc Rate (5.2%)	ft/min	420	530	640	740	840	950	
						FAF-MAPt	min:sec	4:25	3:32	2:57	2:31	2:12	1:58	

TURKISTAN  
VOR/DME Z RWY05                      AERONAUTICAL DATA TABULATION

VOR approach to RWY05 from TRK DVOR/DME, DEREГ	
Fix/point	Coordinates
DEREG (IF) D14.0 TRK	43°11'37.5"N 068°18'57.1"E
TRK DVOR/DME (IAF)	43° 19' 32.3"N 068° 34' 46.1"E
D8.9 TRK (FAF)	43° 14' 31.3"N 068° 24' 43.5"E
THR RWY05	43° 18' 10.00"N 068° 32' 00.99"E
Final approach descent angle is 3.0°	